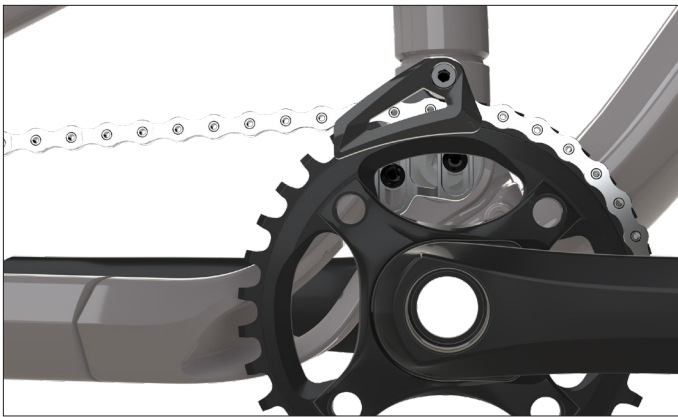


**LOW DIRECT CHAIN GUIDE INSTRUCTIONS**

1. REMOVE CRANKSET FROM YOUR FRAME.
2. INSTALL THE GUIDE ONTO YOUR FRAME WITH THE BOLTS AND WASHERS PROVIDED. THE TOP GUIDE CAN BE ROTATED UPWARDS BY LOOSENING THE BOLT.

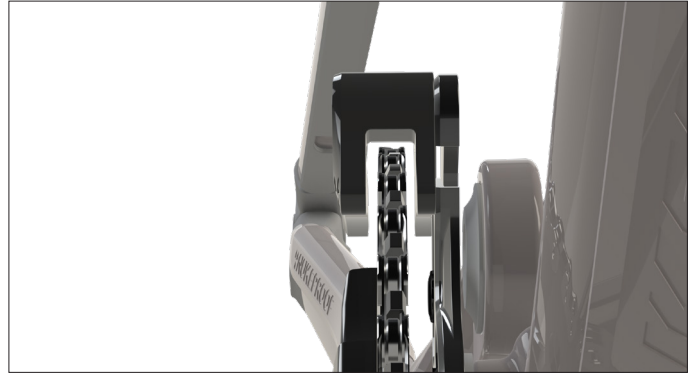


3. REFIT DRIVESIDE CRANKARM / CHAIN RING TO CHECK CHAIN LINE. THE GUIDE SHOULD BE IN THE CENTRE OF THE CHAIN RING. WASHERS ARE SUPPLIED TO HELP YOU FINE TUNE SET UP SO INSTALL WASHERS IF REQUIRED TO ADJUST CHAINLINE



4. WHEN GUIDE IS SET UP, TIGHTEN BOLTS TO 3NM AND REINSTALL CRANKSET.

5. ADJUST TOP GUIDE SO THAT THERE IS APPROX. 3MM SPACE BETWEEN TOP OF THE GUIDE AND THE CHAIN.



6. EVERYTHING SHOULD NOW BE FITTED. DOUBLE CHECK THE CHAINLINE IS GOOD AND THERE IS NO EXCESSIVE RUBBING ON THE GUIDE, ESPECIALLY WHEN IN THE LARGEST / SMALLEST SPROCKETS. ON FULL SUSPENSION FRAMES IT IS ALSO WORTH CHECKING THAT EVERYTHING IS WORKING AS IT SHOULD WHEN THE BIKE IS IN A 'BOTTOMED OUT' POSITION. THIS CAN BE DONE BY REMOVING THE AIR FROM YOUR SHOCK (OR COIL SPRING IF YOU HAVE A COIL SHOCK).

